

A quarry lake can be very cold even on a hot summer's day – you could die from 'Cold Water Shock' in less than 2 minutes.

'Cold Water Shock' can cause you to gasp involuntarily and inhale water, a very rapid increase in your breathing and the onset of panic. A deadly combination that can drown even strong swimmers within seconds of entering the water.

Assuming you survive the cold shock, the drop in temperature causes finger stiffness (making it difficult to climb out), reduced coordination (making it difficult to swim/tread water) and general muscle weakness. The combination of these symptoms make it very difficult to get yourself out of trouble.

Cold water shock can occur in water at 15°C or below. Even in mid-summer, the water in many quarry lakes will be well below this temperature.

PLEASE RESPECT THE WATER

Remember – warning signs are there to protect you
Visit our campaign Facebook page – Stay Safe Stay Out of Quarries

Why water in active & former quarries can be dangerous

- Very deep and cold water
- Sudden, unexpected changes in depth
- Steep or crumbling sides making it difficult to exit
- Submerged machinery or rocks that can injure jumpers
- Underwater plants, machinery or debris that can trap you
- Currents or powerful underwater pumps
- Dead animals/excrement in water causing disease
- Pollution/high alkalinity causing rashes, irritation and stomach problems
- Poisonous algae

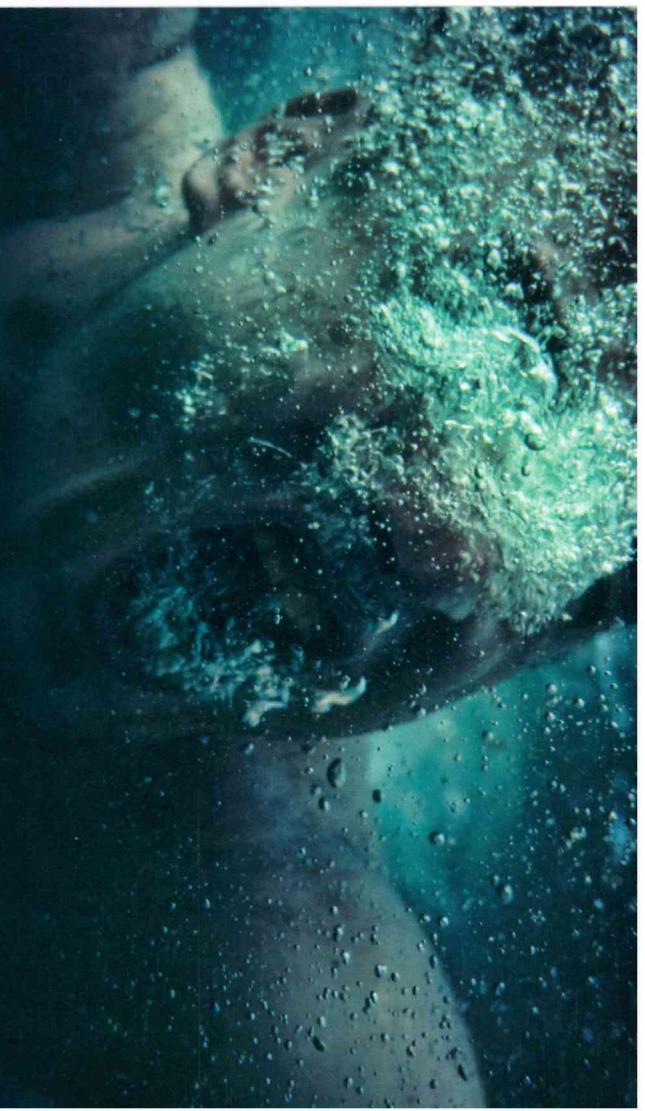


For more information, contact the
Mineral Products Association on
0207 963 8000 or info@mineralproducts.org



essential materials
sustainable solutions

Based on original artwork by the Department of Agriculture,
Environment and Rural Affairs, Northern Ireland ©



QUARRY WATER IS STONE COLD AND CAN KILL

STAY SAFE STAY OUT